

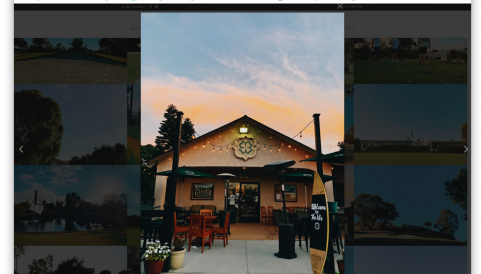


2024 Annual Wine Vine Uncorked Carlsbad Tasting Event

Rotary Club of Carlsbad



Emerald Isle Golf Course for Two



Starting Bid **\$20.00**

Retail Value \$40.00

2 Available

Donated by **Agua Hedionda Lagoon Foundation**

Emerald Isle Golf Course for Two

One round of golf from Monday through Sunday at anytime for 2 players at Emerald Isle Executive Golf Course (cart not included).

To schedule your time, call The Emerald Isle Golf Course at 760.721.4700

The Emerald Isle Golf Course

Emerald Isle Golf Course is an 18 hole executive course located in Oceanside, California, owned and operated by local husband and wife team, Holly and John Kennedy, both PGA Professionals. Located between San Diego and Los Angeles, the course is only minutes away from miles of smooth white beaches and the West Coast's longest wooden pier located in Oceanside Harbor. Originally built in 1965 and designed around two natural lakes, the property features championship quality greens,

an all grass driving range, a short game practice area, club fitting and golf instruction provided by award winning PGA and LPGA Professionals.

Emerald Isle has earned a reputation as "North County's Most Challenging Executive Course", and with an average round taking less than three hours, you can count on a fun, fast and affordable golf experience.

Location:

Emerald Isle Golf Course

660 South El Camino Real, Oceanside, CA92057

www.emeraldislegolf.net; info@emeraldislegolf.net